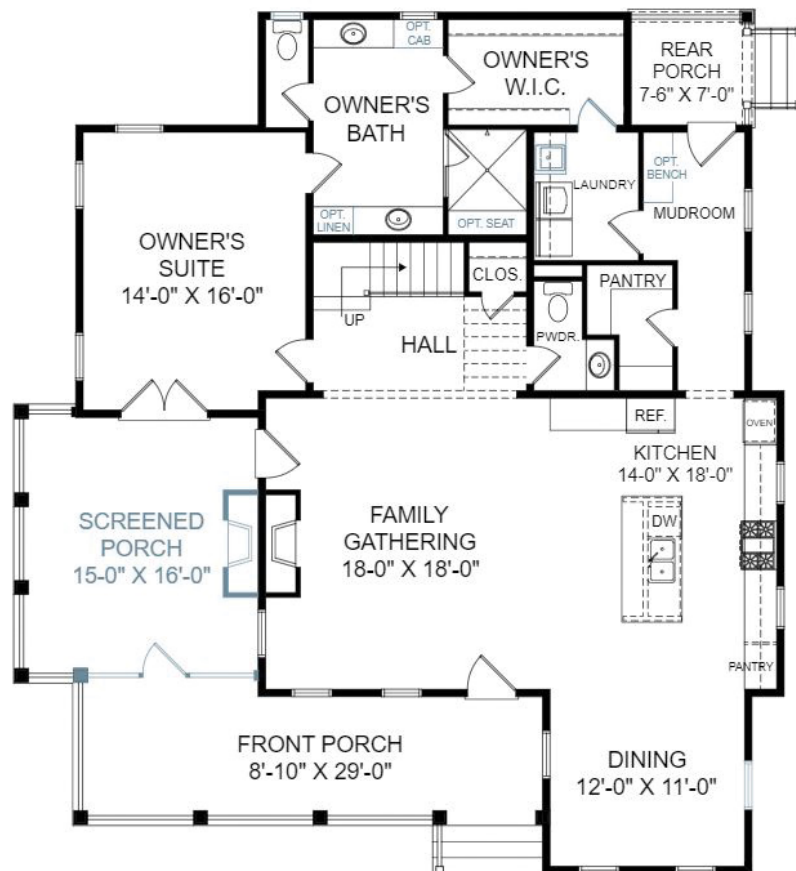


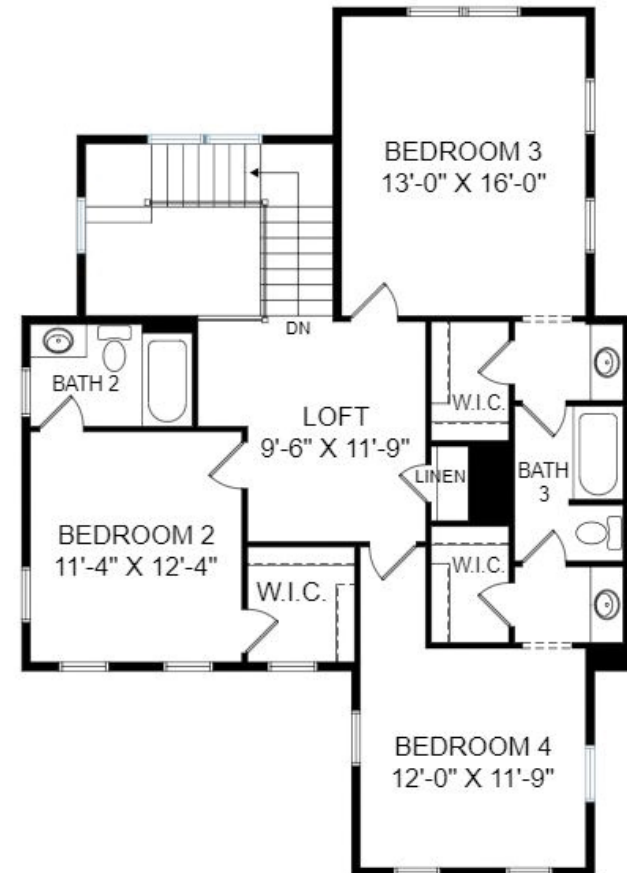
THE RIVERSIDE

4 Bedrooms | 3.5 Bathrooms | 2-Car Detached Garage | 2,711 Square Feet

[Click Here for Interactive Floor Plan](#)



Main Level



Upper Level

1832 Bolden Drive, Mt. Pleasant, SC 29466 | 843.888.9747

StanleyMartin.com



©Stanley Martin Homes| In our continued effort of design enhancement, actual product may vary in dimension or details from these drawings and are subject to change without notice. Please consult the Neighborhood Sales Manager for detailed specifications. This brochure is for illustrative purposes and not part of our legal contract.

