



F L O O R   P L A N

# W A T E R E E   R I V E R

1 8 9 1   B O L D E N   D R I V E

This 3,623 square foot coastal designed home features 4 bedrooms, 3.5 bathrooms, master bedroom suite on the first floor, and a detached garage with a FROG. An open floor plan that's overlooking Bolden Lake and perfect for entertaining includes a beautiful kitchen, dining and family room with great outdoor living space on the porch. A downstairs office/den and an upstairs loft provide additional places to retreat. With additional features such as fiber cement low-maintenance siding, sealed crawl space, and spray foam insulation in the roof line, this will be a high performance, low-maintenance home for years to come. Locally-built custom wood cabinets, furniture-style vanities, white oak floors, and a custom lighting package to include fixtures from Circa Lighting are just some of the finish selections designed by our interior designer to create a beautiful and unique custom home. SBC Home, a continuation of Structures Building Company, recognized for almost 20 years of award-winning craftsmanship and Charleston's best customer service, is offering the simplicity of building from a portfolio of locally designed plans. Our homes are built to a higher performance standard which benefits you year after year with more durable, lower maintenance, energy efficient homes. Our philosophy is based on years of experience: keep the client at the core and help them craft a great investment that will pay off for years to come!

For pricing and finishes, contact Haley Cuzzell or Patty Lynn Connell at (843) 654-5083.

D E S I G N . B U I L D . L I F E S I M P L I F I E D .

*All information is approximate and is subject to change.  
Pictures above may include options which are not included in sales price.*



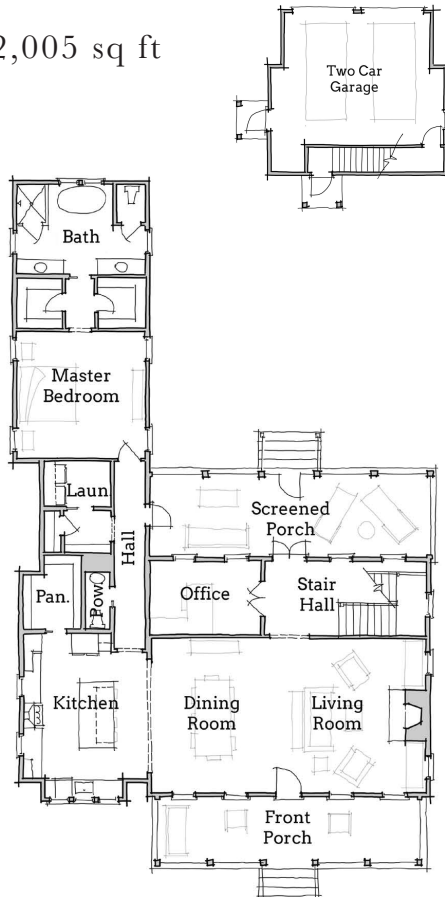
FLOOR PLAN

WATEREE RIVER

First

Floor

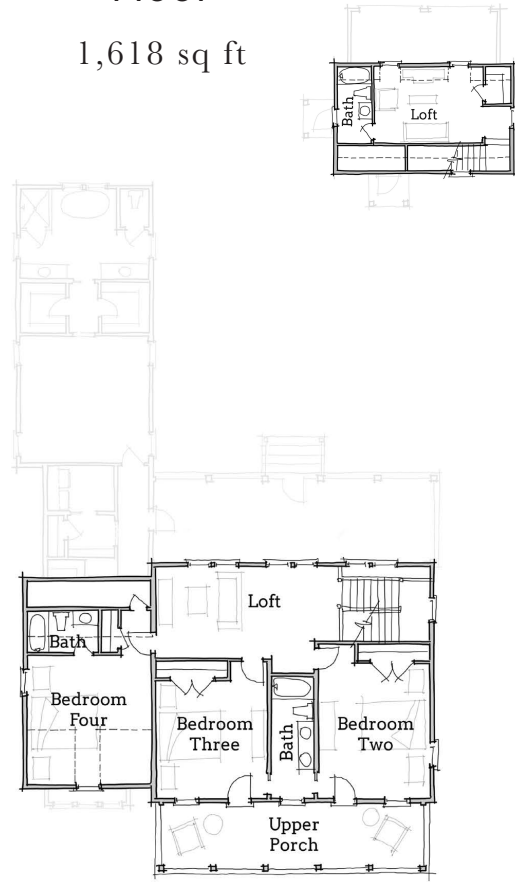
2,005 sq ft



Second

Floor

1,618 sq ft



SBC HOME

[www.sbchome.net](http://www.sbchome.net) | 843.856.6901

*All information is approximate and is subject to change. Pictures above may include options which are not included in sales price.*