

# *The Muirfield*

---



This Lowcountry favorite has an open floor plan that gracefully extends out to the double-stacked porches. Designed to take in the Coastal Breezes or watch the sunrise or sunset. With beautifully designed architecture at every turn this home is expansive for entertaining guests or families alike.

## *Muirfield Features*

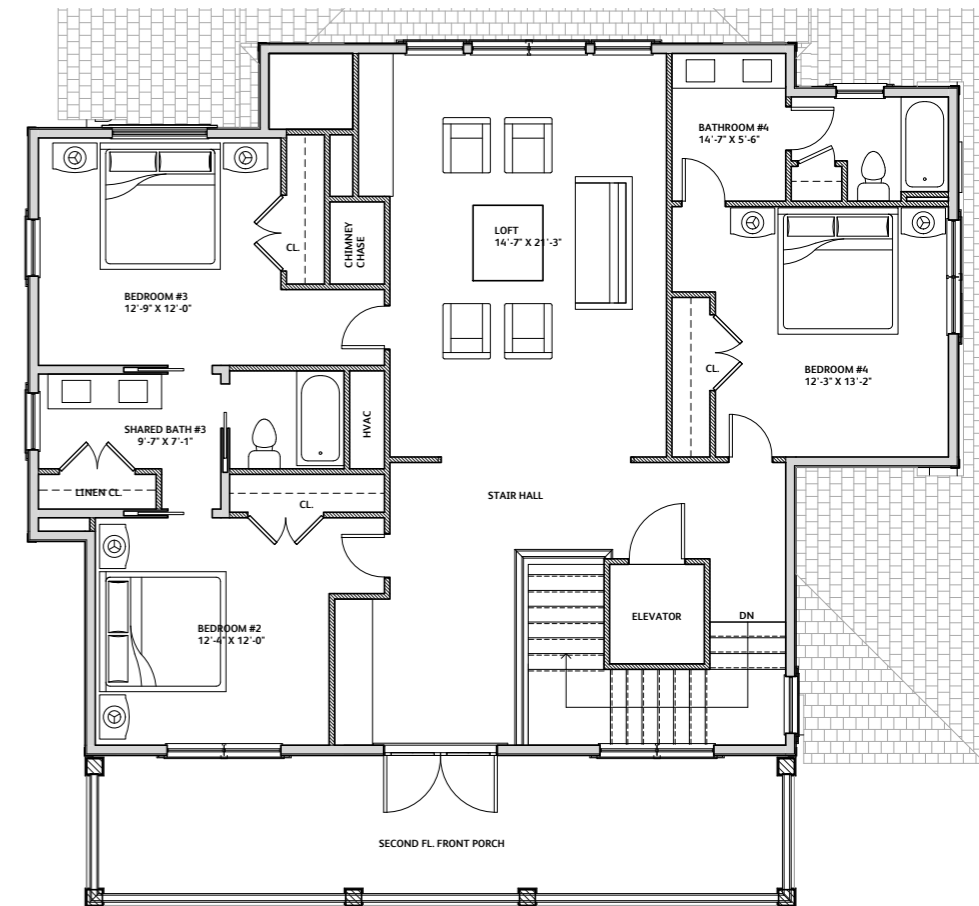
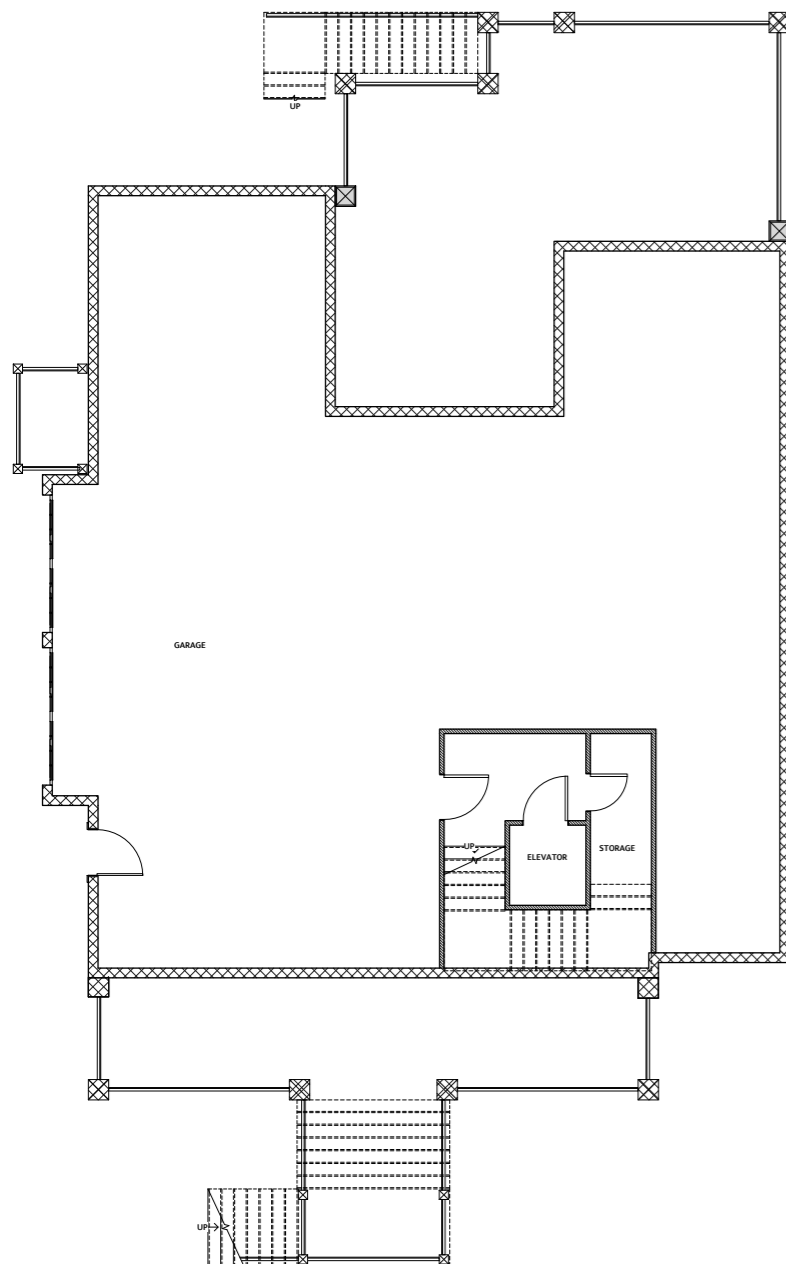
- 3,593 Heated Square Feet
- 626 Square Feet of Front Porches
- 330 Square Foot Rear Porch
- 230 Square Foot Screened Porch
- 4 bedrooms
- 3.5 baths
- First Floor Office/Flex Room
- 2 Car Garage
- 2140 Square Foot Lower Level Foundation



**[www.AxonHomes.com](http://www.AxonHomes.com)**

# The Muirfield

## FLOOR PLAN



[www.AxonHomes.com](http://www.AxonHomes.com)